

Small Signal Transistors

Small Signal General Purpose Transistors

Part No. and Polarity		V _{CEO} (V)	I _C (A)	h _{FE} @ V _{CE} & I _C				V _{CE(sat)} & V _{BE(sat)} @ I _C & I _B				f _T @ V _{CE} & I _C				Outline
NPN	PNP			h _{FE} Min.	h _{FE} Max.	V _{CE} (V)	I _C (mA)	V _{CE(sat)} Min.(V)	V _{BE(sat)} Max.(V)	I _C (mA)	I _B (mA)	f _T Min. (MHz)	f _T Max. (MHz)	V _{CE} (V)	I _C (mA)	
2N3416		50	0.5	75	225	4.5	2.0	---	0.3	50	3.0	---	---	---	---	TO-92
2N3904		40	0.2	100	300	1.0	10	0.3	0.95	50	5.0	300	---	20	10	TO-92
	2N3906	40	0.2	100	300	1.0	10	0.4	0.95	50	5.0	250	---	20	10	TO-92
2N4400		40	0.6	50	150	1.0	150	0.75	1.2	500	50	200	---	10	20	TO-92
	2N4402	40	0.6	50	150	2.0	150	0.75	1.3	500	50	150	---	10	20	TO-92
2N4401		40	0.6	100	300	1.0	150	0.75	1.2	500	50	250	---	10	20	TO-92
	2N4403	40	0.6	100	300	2.0	150	0.75	1.3	500	50	200	---	10	20	TO-92
2N5172		25	0.5	100	500	10	10	0.25	1.2	10	1.0	---	---	---	---	TO-92
	2N6727	40	1.5	50	250	1.0	1000	0.5	---	1000	100	50	---	10	50	TO-92
	2SA562	30	0.5	70	240	1.0	100	0.25	---	100	10	200	---	6.0	20	TO-92
	2SA673	35	0.5	60	320	3.0	10	0.6	---	150	15	---	---	---	---	TO-92
	2SA673A	50	0.5	60	320	3.0	10	0.6	---	150	15	---	---	---	---	TO-92
	2SA733	50	0.1	90	600	6.0	1.0	0.3	---	100	10	100	---	6.0	10	TO-92
	2SA844	55	0.1	160	800	12	2.0	0.5	---	10	1.0	150	---	12	2.0	TO-92
	2SA950	30	0.8	100	320	1.0	100	0.7	---	500	20	120*	---	5.0	10	TO-92
	2SA1015	50	0.15	70	400	6.0	2.0	0.3	1.1	100	10	80	---	10	1.0	TO-92
	2SA1300	10	2.0	140	600	1.0	500	0.5	---	2000	100	100	---	1.0	500	TO-92
	2SB892	50	2.0	100	560	2.0	100	0.4	1.2	1000	50	150	---	10	50	TO-92
2SC380TM		30	0.05	40	240	12	2.0	0.4	---	10	1.0	100	---	5.0	10	TO-92
2SC945		50	0.15	70	700	6.0	1.0	0.3	1.0	100	10	150	---	6.0	10	TO-92
2SC1008		60	0.7	40	400	2.0	50	0.4	1.1	500	50	30	---	10	50	TO-92
2SC1213		35	0.5	60	320	3.0	10	0.6	---	150	15	---	---	---	---	TO-92
2SC1815		50	0.15	70	700	6.0	2.0	0.25	1.0	100	10	80	---	10	1.0	TO-92
2SC1959		30	0.5	70	400	1.0	100	0.25	---	100	10	200	---	6.0	20	TO-92
2SC2001		25	0.7	90	400	1.0	100	0.6	1.2	700	70	50	---	6.0	10	TO-92
2SC2120		30	0.8	100	320	1.0	100	0.5	---	500	20	100	---	5.0	10	TO-92
2SC2216		45	0.05	40	140	12.5	12.5	0.2	1.5	15	1.5	300	---	12.5	12.5	TO-92
2SC3279		10	2.0	140	600	1.0	0.5	0.5	---	2000	50	100	---	1.0	0.5	TO-92
BC184		30	0.1	240	900	5.0	2.0	0.6	1.2	100	5.0	150	---	5.0	10	TO-92
BC184B		30	0.1	240	500	5.0	2.0	0.6	1.2	100	5.0	150	---	5.0	10	TO-92
BC184C		30	0.1	450	900	5.0	2.0	0.6	1.2	100	5.0	150	---	5.0	10	TO-92
	BC212	50	0.1	140	600	5.0	2.0	0.6	1.2	100	5.0	200	---	5.0	10	TO-92
	BC212B	50	0.1	140	400	5.0	2.0	0.6	1.2	100	5.0	200	---	5.0	10	TO-92
	BC212C	50	0.1	350	600	5.0	2.0	0.6	1.2	100	5.0	200	---	5.0	10	TO-92
	BC327	45	0.8	100	630	1.0	100	0.7	1.2	500	50	260	---	5.0	10	TO-92
	BC328	25	0.8	100	630	1.0	100	0.7	1.2	500	50	260	---	5.0	10	TO-92
BC337		45	0.8	100	630	1.0	100	0.7	1.2	500	50	210	---	5.0	10	TO-92
BC337-16		45	0.8	100	250	1.0	100	0.7	1.2	500	50	210	---	5.0	10	TO-92
BC337-25		45	0.8	160	400	1.0	100	0.7	1.2	500	50	210	---	5.0	10	TO-92
BC337-40		45	0.8	250	630	1.0	100	0.7	1.2	500	50	210	---	5.0	10	TO-92
BC338		25	0.8	100	630	1.0	100	0.7	1.2	500	50	210	---	5.0	10	TO-92
BC338-16		25	0.8	100	250	1.0	100	0.7	1.2	500	50	210	---	5.0	10	TO-92
BC338-25		25	0.8	160	400	1.0	100	0.7	1.2	500	50	210	---	5.0	10	TO-92
BC338-40		25	0.8	250	630	1.0	100	0.7	1.2	500	50	210	---	5.0	10	TO-92
BC347		45	0.1	40	450	5.0	2.0	0.3	1.0	10	1.0	125	---	5.0	10	TO-92
	BC350	45	0.1	40	450	5.0	2.0	0.3	1.0	10	1.0	125	---	5.0	10	TO-92
BC368		20	1.0	85	375	1.0	0.5	0.5	---	1000	100	65	---	5.0	10	TO-92
BC368-25		20	1.0	170	375	1.0	0.5	0.5	---	1000	100	65	---	5.0	10	TO-92
	BC369	20	1.0	85	375	1.0	0.5	0.5	---	1000	100	65	---	5.0	10	TO-92
BC546		65	0.1	110	450	5.0	2.0	0.3	1.0	100	5.0	150	---	5.0	10	TO-92
	BC556	65	0.1	120	500	5.0	2.0	0.3	1.0	100	5.0	150	---	5.0	10	TO-92
BC546B		65	0.1	200	450	5.0	2.0	0.3	1.0	100	5.0	150	---	5.0	10	TO-92
	BC556B	65	0.1	180	460	5.0	2.0	0.3	1.0	100	5.0	150	---	5.0	10	TO-92
BC547		45	0.1	110	800	5.0	2.0	0.3	1.0	100	5.0	150	---	5.0	10	TO-92
	BC557	45	0.1	110	800	5.0	2.0	0.3	1.0	100	5.0	150	---	5.0	10	TO-92
BC547A		45	0.1	110	220	5.0	2.0	0.3	1.0	100	5.0	150	---	5.0	10	TO-92
	BC557A	45	0.1	110	220	5.0	2.0	0.3	1.0	100	5.0	150	---	5.0	10	TO-92
BC547B		45	0.1	200	450	5.0	2.0	0.3	1.0	100	5.0	150	---	5.0	10	TO-92
	BC557B	45	0.1	180	460	5.0	2.0	0.3	1.0	100	5.0	150	---	5.0	10	TO-92
BC547C		45	0.1	420	800	5.0	2.0	0.3	1.0	100	5.0	150	---	5.0	10	TO-92
	BC557C	45	0.1	420	800	5.0	2.0	0.3	1.0	100	5.0	150	---	5.0	10	TO-92
BC548		30	0.1	110	800	5.0	2.0	0.3	1.0	100	5.0	150	---	5.0	10	TO-92
	BC558	30	0.1	110	800	5.0	2.0	0.3	1.0	100	5.0	150	---	5.0	10	TO-92
BC548A		30	0.1	110	220	5.0	2.0	0.3	1.0	100	5.0	150	---	5.0	10	TO-92

* = Typical

Part No. and Polarity		V _{CEO}	I _C	h _{FE} @ V _{CE} & I _C				V _{CE(sat)} & V _{BE(sat)} @ I _C & I _B				f _T @ V _{CE} & I _C				Outline	
NPN	PNP	(V)	(A)	h _{FE} Min.	h _{FE} Max.	V _{CE}	I _C	V _{CE(sat)}	V _{BE(sat)}	I _C	I _B	f _T Min.	f _T Max.	V _{CE}	I _C		
						(V)	(mA)	Max.(V)	Max.(V)	(mA)	(mA)	(MHz)	(MHz)	(V)	(mA)		
BC548B	BC558B	30	0.1	200	450	5.0	2.0	0.3	1.0	100	5.0	150	---	5.0	10	TO-92	
		30	0.1	180	460	5.0	2.0	0.3	1.0	100	5.0	150	---	5.0	10	TO-92	
BC548C		30	0.1	420	800	5.0	2.0	0.3	1.0	100	5.0	150	---	5.0	10	TO-92	
BF370	KSA539 KSA642 KSB564A KSC815 KSD471A KSD1616 KSD1616A KTA1266 KTA1270	15	0.1	40	200	1.0	10	0.2	1.2	15	1.5	500	---	10	10	TO-92	
		45	0.2	40	240	1.0	50	0.5	1.2	150	15	---	---	---	---	---	TO-92
		25	0.3	70	400	1.0	50	0.6	---	300	30	---	---	---	---	---	TO-92
		25	1.0	70	400	1.0	100	0.5	1.2	1000	100	80	---	6.0	10	TO-92	
		45	0.2	40	400	1.0	50	0.4	1.1	150	15	100	---	10	10	TO-92	
		30	1.0	70	400	1.0	100	0.5	1.2	1000	100	100	---	6.0	10	TO-92	
		50	1.0	135	600	2.0	100	0.3	---	1000	50	100	---	2.0	100	TO-92	
		60	1.0	135	400	2.0	100	0.3	---	1000	50	100	---	2.0	100	TO-92	
		50	0.15	70	400	6.0	2.0	0.3	1.1	100	10	80	---	10	1.0	TO-92	
		30	0.5	70	240	1.0	100	0.25	---	100	10	150	---	6.0	20	TO-92	
KTC3192	MPS3702	30	0.05	40	240	12	2.0	0.4	1.0	10	1.0	100	---	10	1.0	TO-92	
KTC3198		50	0.15	70	700	6.0	2.0	0.25	1.0	100	10	80	---	10	1.0	TO-92	
KTC3202		30	0.5	70	400	1.0	100	0.25	---	100	10	300*	---	6.0	20	TO-92	
KTC3203		30	0.8	100	320	1.0	100	0.5	---	500	20	120*	---	5.0	10	TO-92	
KTD1146		20	5.0	120	700	2.0	500	0.4	---	3000	60	20	---	6.0	50	TO-92	
M28S		20	1.0	300	1000	1.0	100	0.55	---	600	20	100	---	10	50	TO-92	
MPSA05		MPSA55 MPSA56	25	0.8	60	300	5.0	50	0.25	---	50	5.0	100	---	5.0	50	TO-92
MPSA06			60	0.5	100	---	1.0	100	0.25	---	100	10	100	---	2.0	10	TO-92
MPSW01		MPSW55	80	0.5	100	---	1.0	100	0.25	---	100	10	50	---	1.0	100	TO-92
MPSW05			80	0.5	100	---	1.0	100	0.25	---	100	10	50	---	1.0	100	TO-92
	30		1.0	55	---	5.0	10	0.5	1.2	1000	100	50	---	10	50	TO-92	
	60		0.5	80	---	1.0	50	0.4	1.2	250	10	50	---	5.0	200	TO-92	
MPS2222A**	MPS2907A**	60	0.5	100	---	1.0	50	0.5	1.2	250	10	50	---	5.0	200	TO-92	
	40	0.6	100	300	10	150	1.0	2.0	500	50	300	---	20	20	TO-92		
	60	0.6	100	300	10	10	1.6	2.6	500	50	200	---	20	50	TO-92		
S8050	S8550 S9012 S9014 S9015 S9018 SS8050 STA124	25	0.5	85	300	1.0	50	0.6	1.2	500	50	150	---	6.0	20	TO-92	
S9013		25	0.5	64	300	1.0	50	0.6	1.2	500	50	150	---	6.0	20	TO-92	
S9014		45	0.1	60	1000	5.0	1.0	0.3	1.0	100	5.0	150	---	5.0	10	TO-92	
		45	0.1	60	1000	5.0	1.0	0.3	1.0	100	10	150	---	5.0	10	TO-92	
S9018		18	0.05	28	270	5.0	1.0	0.5	1.4	10	1.0	600	---	5.0	5.0	TO-92	
SS8050		25	1.5	85	300	1.0	100	0.5	1.2	800	80	100	---	10	50	TO-92	
		12	1.0	200	450	1.0	100	0.4	---	500	50	120*	---	5.0	50	TO-92	
STC128		15	1.0	150	---	1.0	100	0.3	---	500	50	120*	---	5.0	50	TO-92	
KTC3205		KTA1273 KTA1274	30	2.0	100	320	2.0	500	2.0	---	1500	30	120*	---	2.0	500	TO-92L
			80	0.4	70	240	2.0	50	0.4	---	200	20	100*	---	10	10	TO-92L
KTC3207	30		2.0	100	320	2.0	500	2.0	---	1500	30	120*	---	2.0	500	TO-92L	
KTC3227	300		0.1	30	150	10	20	1.0	1.0	10	1.0	50	---	10	20	TO-92L	
	80	0.4	70	240	2.0	50	0.4	---	200	20	100*	---	10	10	TO-92L		
2SC1740S	2SA933AS 2SA1585S	50	0.15	120	560	6.0	100	0.5	---	50	5.0	120	---	12	2.0	TO-92S	
2SC4115S		20	2.0	120	390	2.0	100	0.5	---	2000	100	200	---	2.0	500	TO-92S	
		50	0.15	120	560	6.0	1.0	0.4	---	50	5.0	100	---	12	2.0	TO-92S	
2N2222	2N2907 2N2907A	20	3.0	120	560	2.0	100	0.5	---	2000	100	200	---	2.0	500	TO-92S	
		30	0.8	100	300	10	150	0.4	1.3	150	15	250	---	20	20	TO-18	
		40	0.6	100	300	10	150	0.4	1.3	150	15	200	---	20	50	TO-18	
2N2222A		40	0.8	100	300	10	150	0.3	1.2	150	15	300	---	20	20	TO-18	
	60	0.6	100	300	10	150	0.4	1.3	150	15	200	---	20	50	TO-18		
2SD882	2SB772 BD136 BD137 BD139 BD233 BD235 BD237	30	3.0	60	400	2.0	1000	0.5	2.0	2000	200	50	---	5.0	100	TO-126	
BD135		45	1.5	40	250	2.0	150	0.5	---	500	50	---	---	---	---	TO-126	
BD137		60	1.5	40	250	2.0	150	0.5	---	500	50	---	---	---	---	TO-126	
BD139		80	1.5	40	250	2.0	150	0.5	---	500	50	---	---	---	---	TO-126	
BD233		45	2.0	40	---	2.0	150	0.6	---	1000	100	3.0	---	10	250	TO-126	
BD235		60	2.0	40	---	2.0	150	0.6	---	1000	100	3.0	---	10	250	TO-126	
BD237		80	2.0	40	---	2.0	150	0.6	---	1000	100	3.0	---	10	250	TO-126	
2N2219A		2N2905 2N2905A	50	0.8	100	300	10	150	1.0	2.0	500	50	300	---	20	20	TO-39
	40		0.6	100	300	10	150	0.4	1.3	150	15	200	---	20	50	TO-39	
	60		0.6	100	300	10	150	0.4	1.3	150	15	200	---	20	50	TO-39	
2N3019	80		1.0	100	300	10	150	0.2	1.1	150	15	100	400	10	50	TO-39	
2N3053	40		0.7	50	250	10	150	1.4	1.7	150	15	100	---	10	50	TO-39	
2N3501	150	0.3	100	300	10	150	0.4	1.2	150	15	---	---	---	---	---	TO-39	

* = Typical

**= Also can be named PNXXXXA

Part No. and Polarity		V _{CEO}	I _C	h _{FE} @ V _{CE} & I _C				V _{CE(sat)} & V _{BE(sat)} @ I _C & I _B				f _T @ V _{CE} & I _C				Outline
NPN	PNP	(V)	(A)	h _{FE} Min.	h _{FE} Max.	V _{CE} (V)	I _C (mA)	V _{CE(sat)} Max.(V)	V _{BE(sat)} Max.(V)	I _C (mA)	I _B (mA)	f _T Min. (MHz)	f _T Max. (MHz)	V _{CE} (V)	I _C (mA)	
2SC3739	2SA1037	50	0.15	120	560	6.0	1.0	0.5	---	50	5.0	120	---	12	2.0	
	2SA1464	40	0.5	75	300	2.0	150	0.75	---	500	50	150	---	10	20	
	2SB709A	45	0.2	160	460	10	2.0	0.5	---	100	10	60	---	10	1.0	
		40	0.5	75	300	1.0	150	0.75	1.2	500	50	200	---	10	20	
	BC807-16	45	0.5	100	250	1.0	100	0.7	1.2	500	50	100	---	5.0	100	
	BC807-25	45	0.5	160	400	1.0	100	0.7	1.2	500	50	100	---	5.0	100	
	BC807-40	45	0.5	250	600	1.0	100	0.7	1.2	500	50	100	---	5.0	100	
	BC817-16	45	0.8	100	250	1.0	100	0.7	---	500	50	100	---	5.0	10	
	BC817-25	45	0.8	160	400	1.0	100	0.7	---	500	50	100	---	5.0	10	
	BC817-40	45	0.8	250	600	1.0	100	0.7	---	500	50	100	---	5.0	10	
	BC846A	65	0.1	110	200	5.0	2.0	0.5	1.1	100	5.0	100	---	5.0	10	
	BC846B	65	0.1	200	450	5.0	2.0	0.5	1.1	100	5.0	100	---	5.0	10	
	BC847A	50	0.1	110	200	5.0	2.0	0.5	1.1	100	5.0	100	---	5.0	10	
	BC847B	50	0.1	200	450	5.0	2.0	0.5	1.1	100	5.0	100	---	5.0	10	
	BC847C	50	0.1	420	800	5.0	2.0	0.5	1.1	100	5.0	100	---	5.0	10	
	BC848A	30	0.1	110	200	5.0	2.0	0.5	1.1	100	5.0	100	---	5.0	10	
	BC848B	30	0.1	200	450	5.0	2.0	0.5	1.1	100	5.0	100	---	5.0	10	
	BC848C	30	0.1	420	800	5.0	2.0	0.5	1.1	100	5.0	100	---	5.0	10	
		BC856A	65	0.1	125	250	5.0	2.0	0.5	1.1	100	5.0	100	---	5.0	10
		BC856B	65	0.1	220	475	5.0	2.0	0.5	1.1	100	5.0	100	---	5.0	10
	BC857A	45	0.1	125	250	5.0	2.0	0.5	1.1	100	5.0	100	---	5.0	10	
	BC857B	45	0.1	220	475	5.0	2.0	0.5	1.1	100	5.0	100	---	5.0	10	
	BC857C	45	0.1	420	800	5.0	2.0	0.5	1.1	100	5.0	100	---	5.0	10	
	BC858A	30	0.1	220	475	5.0	2.0	0.5	1.1	100	5.0	100	---	5.0	10	
	BC858B	30	0.1	125	250	5.0	2.0	0.5	1.1	100	5.0	100	---	5.0	10	
	BC858C	30	0.1	220	475	5.0	2.0	0.5	1.1	100	5.0	100	---	5.0	10	
BCW60C	BCW61B	32	0.1	250	460	5.0	2.0	0.55	1.05	50	1.25	100	---	5.0	10	
	BCW61C	32	0.2	180	310	5.0	2.0	0.55	1.05	50	1.25	100	---	5.0	10	
BCW66H	BCW68G	32	0.1	250	460	5.0	2.0	0.55	1.05	50	1.25	100	---	5.0	10	
	BCW68H	45	0.8	250	630	1.0	100	0.7	2.0	500	50	100*	---	10	20	
		45	0.8	160	400	1.0	100	0.7	2.0	500	50	200*	---	5.0	50	
BCX70G		45	0.8	250	630	2.0	100	1.0	2.0	500	50	100*	---	10	20	
BCX70H		45	0.2	120	220	5.0	2.0	0.55	1.05	50	1.25	100	---	5.0	10	
BCX70J		45	0.2	180	310	5.0	2.0	0.55	1.05	50	1.25	100	---	5.0	10	
BCX70K		45	0.2	250	460	5.0	2.0	0.55	1.05	50	1.25	100	---	5.0	10	
		45	0.2	380	630	5.0	2.0	0.55	1.05	50	1.25	100	---	5.0	10	
BFS20		20	0.025	40	120	10	7.0	0.3	---	10	1.0	275	---	10	5.0	
FMMT4124	KTA1504	25	0.2	120	360	1.0	2.0	0.3	0.95	50	5.0	300	---	20	10	
	KTA1298	50	0.15	70	400	6.0	2.0	0.3	---	100	10	80	---	10	1.0	
		30	0.8	100	320	1.0	100	0.4	---	500	20	80	---	5.0	10	
KTC3265		30	0.8	160	320	1.0	100	0.5	---	500	20	120	---	5.0	10	
MMBT451	MMBT1015	60	1.0	50	150	10	150	0.35	1.1	150	15	150	---	10	150	
MMBT1815		50	0.15	70	400	6.0	2.0	0.3	1.1	100	10	80	---	10	1.0	
MMBT2222A		50	0.15	70	700	6.0	2.0	0.25	1.0	100	10	80	---	10	50	
	MMBT2907A	40	0.6	100	300	10	150	0.6	1.2	500	50	300	---	20	20	
MMBT3904	MMBT3906	60	0.6	100	300	10	150	1.6	2.6	500	50	200	---	20	50	
		40	0.2	100	300	1.0	10	0.3	0.95	50	5.0	300	---	20	10	
MMBT4401	MMBT4403	40	0.2	100	300	1.0	10	0.4	0.95	50	5.0	250	---	20	10	
		40	0.6	100	300	1.0	150	0.75	1.2	500	50	250	---	10	20	
MMBTA05		40	0.6	100	300	2.0	150	0.75	1.3	500	50	200	---	10	20	
MMBTA06		60	0.5	100	---	1.0	10	0.25	---	100	10	100	---	2.0	10	
	MMBTA55	80	0.5	100	200	1.0	100	0.25	1.2	100	10	100	---	2.0	10	
	MMBTA56	60	0.5	100	---	1.0	10	0.25	---	100	10	50	---	1.0	100	
		80	0.5	100	---	1.0	100	0.25	---	100	10	50	---	1.0	100	
MMS8050	MMS8550	25	0.5	120	350	1.0	100	0.6	1.2	500	50	150	---	6.0	20	
	MMS9012	25	0.5	120	350	1.0	50	0.6	1.2	500	50	150	---	6.0	20	
MMS9013		25	0.5	120	350	1.0	50	0.6	1.2	500	50	150	---	6.0	20	
MMS9014		25	0.5	120	350	1.0	50	0.6	1.2	500	50	150	---	6.0	20	
	MMS9015	45	0.1	200	1000	5.0	1.0	0.3	1.0	100	5.0	150	---	5.0	10	
MMS9018		45	0.1	200	1000	5.0	1.0	0.3	1.0	100	10	150	---	5.0	10	
MMS8050	MMSS8550	18	0.05	70	190	5.0	1.0	0.5	---	10	1.0	600	---	5.0	5.0	
		25	1.5	120	350	1.0	100	0.5	1.2	800	80	100	---	10	50	

* = Typical

Part No. and Polarity		V _{CEO} (V)	I _C (A)	h _{FE} @ V _{CE} & I _C				V _{CE(sat)} & V _{BE(sat)} @ I _C & I _B				f _T @ V _{CE} & I _C				Outline
NPN	PNP			h _{FE} Min.	h _{FE} Max.	V _{CE} (V)	I _C (mA)	V _{CE(sat)} Max.(V)	V _{BE(sat)} Max.(V)	I _C (mA)	I _B (mA)	f _T Min. (MHz)	f _T Max. (MHz)	V _{CE} (V)	I _C (mA)	
2SC1623 2SD596	2SA812	50	0.1	90	600	6.0	1.0	0.3	---	100	10	180	---	6.0	10	SOT-23-3L
	2SB624	25	0.7	110	400	1.0	100	0.6	---	700	70	140	---	6.0	10	SOT-23-3L
		50	0.1	90	600	6.0	1.0	0.3	1.0	100	10	250	---	6.0	10	SOT-23-3L
		25	0.7	110	400	1.0	100	0.6	---	700	70	140	---	6.0	10	SOT-23-3L
2SC4177 MMSC945 MMST2222A MMST3904 MMST4401	MMST3906 MMST4403	50	0.1	90	600	6.0	1.0	0.3	1.0	100	10	250	---	6.0	10	SOT-323
		50	0.15	70	700	6.0	1.0	0.3	1.0	100	10	200	---	6.0	10	SOT-323
		40	0.6	100	300	10	150	0.6	1.0	500	50	300	---	20	20	SOT-323
		40	0.2	100	300	1.0	10	0.25	0.85	10	1.0	300	---	20	10	SOT-323
		40	0.2	100	300	1.0	10	0.20	0.85	10	1.0	300	---	20	10	SOT-323
		40	0.6	100	300	1.0	150	0.75	1.2	500	50	250	---	10	20	SOT-323
PZT2222A PZT3904 PZT4401	PZT2907A PZT3906 PZT4403	40	0.6	100	300	10	150	1.0	2.0	500	50	300	---	1.0	500	SOT-223
		40	0.6	100	300	10	150	1.6	2.6	500	50	200	---	20	50	SOT-223
		40	0.2	100	300	1.0	10	0.3	0.95	50	5.0	300	---	20	10	SOT-223
		40	0.2	100	300	1.0	10	0.4	0.95	50	5.0	250	---	20	10	SOT-223
MMDT2222A MMDT3904 MMDT3946	MMDT3906	40	0.6	100	300	1.0	150	1.0	2.0	500	50	300	---	20	20	SOT-363
		40	0.2	100	300	1.0	10	0.3	0.95	50	5.0	300	---	20	10	SOT-363
		40	0.2	100	300	1.0	10	0.4	0.95	50	5.0	250	---	20	10	SOT-363
		40	0.2	100	300	1.0	10	0.3	0.95	50	5.0	300	---	20	20	SOT-363
BC847BV MMDT3904V	BC857BV MMDT3906V	45	0.1	200	450	5.0	2.0	0.3	0.9	100	5	100	---	5	10	SOT-563
		45	0.1	200	475	5.0	2.0	0.4	0.9	100	5	100	---	5	10	SOT-563
		40	0.2	100	300	1.0	10	0.3	0.95	50	5.0	300	---	20	10	SOT-563
		40	0.2	100	300	1.0	10	0.4	0.95	50	5.0	250	---	20	10	SOT-563
BC868-16 BC868-25 BC869-16 BC869-25 BCX56 BCX56-10 BCX56-16	2SA1213 2SB1308 2SB1260 2SB1188 BC869-16 BC869-25	50	2.0	70	240	2.0	500	0.5	1.2	1000	50	100	---	2.0	500	SOT-89
		20	3.0	82	390	2.0	500	0.45	---	1500	150	50	---	6.0	50	SOT-89
		80	1.0	82	390	3.0	100	0.4	---	500	50	80	---	5.0	50	SOT-89
		32	2.0	82	390	3.0	500	0.8	---	2000	200	80	---	5.0	500	SOT-89
		20	1.0	100	250	1.0	500	0.5	---	1000	100	40	---	5.0	10	SOT-89
		20	1.0	160	---	1.0	500	0.5	---	1000	100	40	---	5.0	10	SOT-89
FCX591 KTA1663	2SA1235A	20	2.0	100	250	1.0	500	0.5	---	1000	100	40	---	5.0	10	SOT-89
		20	2.0	100	250	1.0	500	0.5	---	1000	100	40	---	5.0	10	SOT-89
		20	2.0	160	375	1.0	500	0.5	---	1000	100	40	---	5.0	10	SOT-89
		80	1.0	63	250	2.0	150	0.5	---	500	50	130	---	10	50	SOT-89
80	1.0	63	160	2.0	150	0.5	---	500	50	130	---	10	50	SOT-89		
80	1.0	100	250	2.0	150	0.5	---	500	50	130	---	10	50	SOT-89		
60	1.0	100	300	5.0	500	0.6	1.2	1000	100	150	---	10	50	SOT-89		
30	1.5	100	320	2.0	500	2.0	---	1500	500	80	---	5.0	50	SOT-89		

Small Signal Low Noise Transistors

Part No. and Polarity		P _D (mW)	N _F Max. (dB)	Condition Frequency	V _{CEO} (V)	I _C (A)	h _{FE} @ V _{CE} & I _C				V _{CE(sat)} @ I _C & I _B			Outline
NPN	PNP						h _{FE} Min.	h _{FE} Max.	V _{CE} (V)	I _C (mA)	V _{CE(sat)} Max.(V)	I _C (mA)	I _B (mA)	
2N4123					30	0.2	25	---	1.0	50	0.3	50	5.0	TO-92
2N4124					25	0.2	60	---	1.0	50	0.3	50	5.0	TO-92
2SC1317 2SD1513	2SA608 2SA836 2SA1318	200	5.0	Audio	50	0.15	160	560	6.0	1.0	0.3	100	10	TO-92
					55	0.1	160	500	12	2.0	0.5	10	1.0	TO-92
					50	0.2	100	560	6.0	1.0	0.3	100	10	TO-92
					25	0.5	85	340	10	150	0.6	300	30	TO-92
					16	2.0	135	650	2.0	100	0.5	1500	75	TO-92
KTC3199		400	10	1kHz	50	0.15	70	700	6.0	2.0	0.25	100	10	TO-92S
2SC3052 KTC3875S KTC4075 MMBR901	2SA1235A	150	15	Audio	50	0.2	150	500	6.0	1.0	0.3	100	10	SOT-23
					50	0.2	150	800	6.0	1.0	0.3	100	10	SOT-23
					50	0.15	70	700	6.0	2.0	0.25	100	10	SOT-23
					50	0.15	70	700	6.0	2.0	0.25	100	10	SOT-23
					15	0.03	50	200	5.0	5.0	---	---	---	SOT-23

Small Signal RF/VHF/UHF Transistors

Part No. and Polarity		V _{CEO} (V)	I _C (A)	f _T @ V _{CE} & I _C				C _{obMax.} (pF)	G _{peMin.} (dB)	h _{FE} @ V _{CE} & I _C				NF @ f		Outline
NPN	PNP			f _{T Min.} (MHz)	f _{T Max.} (MHz)	V _{CE} (V)	I _C (mA)			h _{FE Min.}	h _{FE Max.}	V _{CE} (V)	I _C (mA)	N _{FMax.} (dB)	f (MHz)	
2SC1674		20	0.02	400	---	6.0	1.0	1.5	---	40	240	6.0	1.0	5.0	100	TO-92
MPS918		15	0.05	600	---	10	4.0	1.7	---	20	---	1.0	3.0	6.0	60	TO-92
MMBTH10		25	0.05	650	---	10	4.0	0.7	---	60	---	10	4.0	---	---	SOT-23
2SC2734		11	0.05	1400	---	10	10	1.5	---	20	200	10	5	12	900	SOT-23-3L
2SC2735		20	0.05	600	---	10	10	1.5	---	40	---	10	10	8.0	200	SOT-23-3L
2SC3356		12	0.1	6000	---	10	20	---	---	50	300	10	20	2.0	1000	SOT-23-3L
2SC3838K		11	0.05	1400	---	10	10	---	---	27	270	10	5.0	4.0	500	SOT-23-3L

Small Signal High Voltage Transistors

Part No. and Polarity		V _{CEO} (V)	I _C (A)	h _{FE} @ V _{CE} & I _C				V _{CE(sat)} & V _{BE(sat)} @ I _C & I _B				f _T @ V _{CE} & I _C				Outline
NPN	PNP			h _{FE Min.}	h _{FE Max.}	V _{CE} (V)	I _C (mA)	V _{CE(sat)} Max.(V)	V _{BE(sat)} Max.(V)	I _C (mA)	I _B (mA)	f _{T Min.} (MHz)	f _{T Max.} (MHz)	V _{CE} (V)	I _C (mA)	
2N5550	2N5400	120	0.6	40	180	5.0	10	0.5	1.0	50	5.0	100	400	10	10	TO-92
		140	0.6	60	250	5.0	10	0.25	1.2	50	5.0	100	300	10	10	TO-92
	150	0.6	60	240	5.0	10	0.5	1.0	50	5.0	100	300	10	10	TO-92	
2N5551		160	0.6	80	250	5.0	10	0.5	1.0	50	5.0	100	300	10	10	TO-92
2N6515		250	0.5	50	300	10	30	0.5	0.9	30	3.0	40	200	20	10	TO-92
2N6517	2N6520	350	0.5	30	200	10	30	0.5	0.9	30	3.0	40	200	20	10	TO-92
	2N6519	300	0.5	45	270	10	30	0.5	0.9	30	3.0	40	200	20	10	TO-92
2SC2611	2SA821	210	0.03	56	270	3.0	5.0	0.6	---	2.0	0.2	30	---	5.0	2.0	TO-92
		400	0.2	10	40	20	20	0.5	1.2	50	10	8.0	---	20	20	TO-92
BF420	BF421	300	0.1	50	---	20	25	0.6	---	30	5.0	60	---	10	10	TO-92
BF422	BF423	250	0.1	50	---	20	25	0.6	---	30	5.0	60	---	10	10	TO-92
KTC3200		120	0.1	200	700	6.0	2.0	0.3	---	10	1.0	100*	---	6.0	1.0	TO-92
MPSA42		300	0.3	80	250	10	10	0.5	0.9	20	2.0	50	---	5.0	10	TO-92
MPSA43		200	0.3	80	250	10	10	0.4	0.9	20	2.0	50	---	5.0	10	TO-92
MPSA44		400	0.2	80	300	10	10	0.2	0.75	10	1.0	---	---	---	---	TO-92
	MPSA92	300	0.3	80	250	10	10	0.5	0.9	20	2.0	50	---	5.0	10	TO-92
	MPSA94	400	0.2	80	300	10	10	0.2	0.75	10	1.0	---	---	---	---	TO-92
ZTX458		400	0.3	100	300	10	50	0.5	---	50	6.0	50	---	20	10	TO-92
	ZTX558	400	0.2	100	300	10	50	0.5	---	50	6.0	50	---	20	10	TO-92
	2SA821S	210	0.03	56	270	3.0	5.0	0.6	---	2.0	0.2	30	---	5.0	2.0	TO-92S
	2SA1013	160	1.0	65	310	5.0	200	1.5	---	500	50	15	---	5.0	200	TO-92MOD
2SC2229		150	0.05	70	240	5.0	10	0.5	1.0	10	1.0	80	---	30	10	TO-92MOD
2SC2230		160	0.1	120	400	10	10	0.5	---	50	5.0	50	---	10	10	TO-92MOD
2SC2383		160	1.0	60	320	5.0	200	1.0	---	500	50	20	---	5.0	200	TO-92MOD
2SC2482		300	0.1	30	150	10	20	1.0	1.0	10	1.0	50	---	10	20	TO-92MOD
	KSA910	150	0.05	40	240	5.0	10	0.8	---	10	1.0	80	---	30	10	TO-92MOD
KSC2330		300	0.1	40	240	10	20	0.5	---	10	1.0	50	---	30	10	TO-92MOD
MMBT5550	MMBT5400	120	0.6	40	180	5.0	10	0.5	1.0	50	5.0	100	400	10	10	SOT-23
MMBT5551		140	0.6	60	250	5.0	10	0.25	1.2	50	5.0	100	---	10	10	SOT-23
		160	0.6	100	200	5.0	10	0.5	1.0	50	5.0	100	---	10	10	SOT-23
	MMBT5401	150	0.6	100	200	5.0	10	0.5	1.0	50	5.0	100	---	5.0	10	SOT-23
MMBTA42		300	0.3	40	---	10	10	0.5	0.9	20	2.0	50	---	20	10	SOT-23
MMBTA43		200	0.3	40	---	10	10	0.5	0.9	20	2.0	50	---	20	10	SOT-23
MMBTA44		400	0.2	80	300	10	10	0.2	0.75	10	1.0	---	---	---	---	SOT-23
	MMBTA92	300	0.3	100	200	10	10	0.5	0.9	20	2.0	50	---	5.0	10	SOT-23

* = Typical

Small Signal Darlington Transistors

Part No. and Polarity		V _{CEO} (V)	I _C (A)	h _{FE} @ V _{CE} & I _C		V _{CE(sat)} & V _{BE(sat)} @ I _C & I _B				f _T @ V _{CE} & I _C				Outline		
NPN	PNP			h _{FE Min.}	h _{FE Max.}	V _{CE} (V)	I _C (mA)	V _{CE(sat)} Max.(V)	V _{BE(sat)} Max.(V)	I _C (mA)	I _B (mA)	f _{T Min.} (MHz)	f _{T Max.} (MHz)		V _{CE} (V)	I _C (mA)
2N5308		40	1.2	7K	70K	5.0	2.0	1.4	1.6	200	0.2	---	---	---	---	TO-92
MPSA12		20	1.2	20K	---	5.0	10	1.0	---	10	0.01	---	---	---	---	TO-92
MPSA13		30	0.5	10K	---	5.0	100	1.5	---	100	0.1	125	---	5.0	10	TO-92
MPSA14		30	0.5	20K	---	5.0	100	1.5	---	100	0.1	125	---	5.0	10	TO-92
MMBTA13		30	0.3	10K	---	5.0	100	1.5	---	100	0.1	125	---	5.0	10	SOT-23
MMBTA14		30	0.3	20K	---	5.0	100	1.5	---	100	0.1	125	---	5.0	10	SOT-23

High Power Silicon Transistors

Part No. and Polarity		V _{CEO} (V)	I _C (A)	h _{FE} @ V _{CE} & I _C				V _{CE(sat)} & V _{BE(sat)} @ I _C & I _B			f _T @ V _{CE} & I _C				Outline
NPN	PNP			h _{FE} Min.	h _{FE} Max.	V _{CE} (V)	I _C (mA)	V _{CE(sat)} Max.(V)	I _C (A)	I _B (A)	f _T Min. (MHz)	f _T Max. (MHz)	V _{CE} (V)	I _C (mA)	
TIP29		40	1.0	15	75	4.0	1.0	0.7	1.0	4.0	3.0	---	10	200	TO-220
TIP29A		60	1.0	15	75	4.0	1.0	0.7	1.0	4.0	3.0	---	10	200	TO-220
TIP29B		80	1.0	15	75	4.0	1.0	0.7	1.0	4.0	3.0	---	10	200	TO-220
TIP29C		100	1.0	15	75	4.0	1.0	0.7	1.0	4.0	3.0	---	10	200	TO-220
	TIP30	40	1.0	15	75	4.0	1.0	0.7	1.0	0.125	3.0	---	10	200	TO-220
	TIP30A	60	1.0	15	75	4.0	1.0	0.7	1.0	0.125	3.0	---	10	200	TO-220
	TIP30B	80	1.0	15	75	4.0	1.0	0.7	1.0	0.125	3.0	---	10	200	TO-220
	TIP30C	100	1.0	15	75	4.0	1.0	0.7	1.0	0.125	3.0	---	10	200	TO-220
TIP31C		100	3.0	25	50	4.0	1.0	1.2	3.0	0.375	3.0	---	10	200	TO-220
	TIP32	40	3.0	25	---	4.0	1.0	1.2	3.0	0.375	3.0	---	10	500	TO-220
	TIP32B	80	3.0	25	---	4.0	1.0	1.2	3.0	0.375	3.0	---	10	500	TO-220
	TIP32C	100	3.0	25	50	4.0	1.0	1.2	3.0	0.375	3.0	---	10	500	TO-220
TIP41C		100	6.0	15	75	4.0	3.0	1.5	6.0	0.6	3.0	---	10	500	TO-220
TIP100		60	8.0	200	---	4.0	8.0	2.0	3.0	0.006	---	---	---	---	TO-220
TIP101		80	8.0	200	---	4.0	8.0	2.0	3.0	0.006	---	---	---	---	TO-220
TIP102		100	8.0	200	---	4.0	8.0	2.0	3.0	0.006	---	---	---	---	TO-220
	TIP105	60	8.0	200	---	4.0	8.0	2.0	3.0	0.006	---	---	---	---	TO-220
	TIP106	80	8.0	200	---	4.0	8.0	2.0	3.0	0.006	---	---	---	---	TO-220
	TIP107	100	8.0	200	---	4.0	8.0	2.0	3.0	0.006	---	---	---	---	TO-220
TIP112		100	2.0	1000	---	4.0	1.0	2.5	2.0	0.008	---	---	---	---	TO-220
	TIP155	60	2.0	1000	---	4.0	1.0	2.5	2.0	0.008	---	---	---	---	TO-220
	TIP156	80	2.0	1000	---	4.0	1.0	2.5	2.0	0.008	---	---	---	---	TO-220
	TIP157	100	2.0	1000	---	4.0	1.0	2.5	2.0	0.008	---	---	---	---	TO-220
TIP120		60	5.0	1000	---	3.0	0.5	2.0	3.0	0.012	---	---	---	---	TO-220
TIP122		100	5.0	1000	---	3.0	0.5	2.0	3.0	0.012	---	---	---	---	TO-220
	TIP125	60	5.0	1000	---	3.0	0.5	2.0	3.0	0.012	---	---	---	---	TO-220
	TIP126	80	5.0	1000	---	3.0	0.5	2.0	3.0	0.012	---	---	---	---	TO-220

Switching Transistors

Part No. and Polarity		V _{CEO} (V)	I _C (A)	h _{FE} @ V _{CE} & I _C				V _{CE(sat)} & V _{BE(sat)} @ I _C & I _B			f _T @ V _{CE} & I _C				Outline	
NPN	PNP			h _{FE} Min.	h _{FE} Max.	V _{CE} (V)	I _C (mA)	V _{CE(sat)} Max.(V)	V _{BE(sat)} Max.(V)	I _C (mA)	I _B (mA)	f _T Min. (MHz)	f _T Max. (MHz)	V _{CE} (V)		I _C (mA)
MJE13001		400	0.2	10	40	20	20	0.5	1.2	50	10	8.0	---	20	20	TO-92
MJE13002		400	1.0	8.0	60	10	100	0.8	1.0	200	40	5.0	---	10	100	TO-126
MJE13003		400	1.5	8.0	40	2.0	500	1.0	1.2	1000	250	5.0	---	10	100	TO-220
MJE13005		400	4.0	10	40	5.0	1000	0.6	1.6	2000	500	5.0	---	10	500	TO-220
MJE13007		400	8.0	8.0	40	5.0	2000	1.0	1.2	2000	400	4.0	---	10	500	TO-220

HIGH ACCURACY NTC THERMISTORS

OPERATING TEMPERATURE RANGE: -50°C TO 250°C

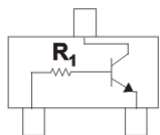
Temperature	NTG 502-32	NTG 502-34	NTG 103-35	NTG 103-33	NTG 103-39	NTG 403-35	NTG 503-40	NTG 104-36	NTG 104-41	Package
°C	KΩ	KΩ	KΩ	KΩ	KΩ	KΩ	KΩ	KΩ	KΩ	
-50	154.5	208.6		329.2						DO-35G
40	88.85	112.86	249.6	188.4						
30	52.85	63.73	140.0	111.3	176.98					
20	32.43	37.40	80.36	67.74	97.10					
10	20.48	22.72	47.73	42.45	55.35					
0	13.29	14.23	29.37	27.28	32.67	115.0	167.1	301.3	340.9	
10	8.839	9.181	18.68	17.96	19.91	73.87	100.5	190.1	204.0	
20	6.013	6.086	12.24	12.09	12.50	48.77	62.61	123.1	125.9	
30	4.179	4.132	8.221	8.313	8.049	33.00	40.07	81.71	79.77	
40	2.962	2.869	5.648	5.828	5.314	22.82	26.28	55.40	51.82	
50	2.138	2.032	3.958	4.161	3.589	16.10	17.69	38.32	34.47	
60	1.568	1.467	2.823	3.021	2.478	11.57	12.13	27.01	23.42	
70	1.169	1.073	2.047	2.229	1.745	8.460	8.498	19.39	16.27	
80	0.8838	0.7959	1.506	1.669	1.252	6.281	6.051	14.15	11.52	
90	0.6774	0.5975	1.124	1.266	0.9117	4.732	4.390	10.49	8.305	
100	0.5267	0.4533	0.8502	0.9735	0.6739	3.613	3.226	7.870	6.092	
110	0.4130	0.3514	0.6510	0.7579	0.5064	2.793	2.409	5.971	4.524	
120	0.3276	0.2756	0.5046	0.5965	0.3858	2.183	1.821	4.583	3.411	
130	0.2631	0.2186	0.3956	0.4750	0.2974	1.728	1.395	3.553	2.603	
140	0.2131	0.1751	0.3137	0.3821	0.2321	1.379	1.081	2.784	2.008	
150	0.1742	0.1418	0.2515	0.3103	0.183	1.108	0.8473	2.202	1.569	
160						0.8948	0.6707	1.758	1.238	
170						0.7256	0.5364	1.417	0.9878	
180						0.5918	0.4331	1.151	0.7944	
190						0.4862		0.9423	0.6454	
200						0.4020		0.7774	0.5280	
210						0.3346		0.6452	0.4349	
220						0.2803		0.5406	0.3611	
230						0.2362		0.4553	0.3018	
240						0.2001		0.3857	0.2539	
250						0.1705		0.3288	0.2149	
260								0.2817	0.1831	
280										
300										
R ₂₅	5.00K	5.00K	10.00K	10.00K	10.00K	40.00K	50.00K	100.00K	100.00K	
B _{25/50}	3275	3470	3572	3380	3950	3508	4000	3697	4100	
B _{25/85}	3324	3528	3630	3435	3983	3550	4048	3750	4140	

DIGITAL TRANSISTORS

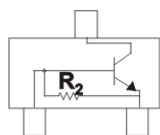
MCC Part Number	Power Dissipation- Pd(mW)	Output Current - Io(mA)	Supply Voltage -V _{CC} (V)	DC Current Gain -Gi	Output Voltage- Vo(V)	Input R1(Ω)	Input R2(Ω)	Transistion Frequency -Ft(MHZ)	Package	Polarity
DTA114ECA	200	50	50	30	0.3	10K	10K	250+	SOT-23	PNP
DTA114EE	150	50	50	30	0.3	10K	10K	250+	SOT-523	PNP
DTA114EUA	200	50	50	30	0.3	10K	10K	250+	SOT-323	PNP
DTA114TCA	200	100	50	100	0.3	10K	0	250+	SOT-23	PNP
DTA114TE	150	100	50	100	0.3	10K	0	250+	SOT-523	PNP
DTA114TUA	200	100	50	100	0.3	10K	0	250+	SOT-323	PNP
DTA114YCA	200	100	50	68	0.3	10K	47K	250+	SOT-23	PNP
DTA114YE	150	100	50	68	0.3	10K	47K	250+	SOT-523	PNP
DTA114YUA	200	100	50	68	0.3	10K	47K	250+	SOT-323	PNP
DTA123JCA	200	100	50	80	0.3	2.2K	47K	250+	SOT-23	PNP
DTA123JE	150	100	50	80	0.3	2.2K	47K	250+	SOT 523	PNP
DTA123JUA	200	100	50	80	0.3	2.2K	47K	250+	SOT-323	PNP
DTA123YCA	200	100	50	33	0.3	2.2K	10K	250+	SOT-23	PNP
DTA123YE	150	100	50	33	0.3	2.2K	10K	250+	SOT-523	PNP
DTA123YUA	200	100	50	33	0.3	2.2K	10K	250+	SOT-323	PNP
DTA124ECA	200	100	50	56	0.3	22K	22K	250+	SOT-23	PNP
DTA124EE	150	100	50	56	0.3	22K	22K	250+	SOT-523	PNP
DTA124EUA	200	100	50	56	0.3	22K	22K	250+	SOT-323	PNP
DTA143ECA	200	100	50	30	0.3	4.7K	4.7K	250+	SOT-23	PNP
DTA143EE	150	100	50	30	0.3	4.7K	4.7K	250+	SOT-523	PNP
DTA143EUA	200	100	50	30	0.3	4.7K	4.7K	250+	SOT-323	PNP
DTA143TCA	200	100	50	100	0.3	4.7K	0	250+	SOT-23	PNP
DTA143TE	150	100	50	100	0.3	4.7K	0	250+	SOT-523	PNP
DTA143TUA	200	100	50	100	0.3	4.7K	0	250+	SOT-323	PNP
DTA143XCA	200	100	50	30	0.3	4.7K	10K	250+	SOT-23	PNP
DTA143XE	150	100	50	30	0.3	4.7K	10K	250+	SOT-523	PNP
DTA143XUA	200	100	50	30	0.3	4.7K	10K	250+	SOT-323	PNP
DTA143ZCA	200	100	50	80	0.3	47K	47K	250+	SOT-23	PNP
DTA143ZE	150	100	50	80	0.3	4.7K	47K	250+	SOT-523	PNP
DTA143ZUA	200	100	50	80	0.3	4.7K	47K	250+	SOT-323	PNP
DTA144ECA	200	100	50	68	0.3	47K	47K	250+	SOT-23	PNP
DTA144EE	150	100	50	68	0.3	47K	47K	250+	SOT-523	PNP
DTA144EUA	200	100	50	68	0.3	47K	47K	250+	SOT-323	PNP
DTA144TCA	200	100	50	100	0.3	47K	0	250+	SOT-23	PNP
DTA144TE	150	100	50	100	0.3	47K	0	250+	SOT-523	PNP
DTA144TUA	200	100	50	100	0.3	47K	0	250+	SOT-323	PNP
DTC113ZCA	200	100	50	33	0.3	1K	10K	250+	SOT-23	NPN
DTC113ZE	150	100	50	33	0.3	1K	10K	250+	SOT-523	NPN
DTC113ZUA	200	100	50	33	0.3	1K	10K	250+	SOT-323	NPN
DTC114ECA	200	100	50	30	0.3	10K	10K	250+	SOT-23	NPN
DTC114EE	150	100	50	30	0.3	10K	10K	250+	SOT-523	NPN
DTC114EUA	200	100	50	30	0.3	10K	10K	250+	SOT-323	NPN
DTC114TCA	200	100	50	100	0.3	10K	0	250+	SOT-23	NPN

DIGITAL TRANSISTORS

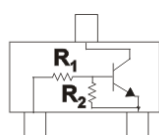
MCC Part Number	Power Dissipation - Pd(mW)	Output Current - Io(mA)	Supply Voltage - V _{CC} (V)	DC Current Gain - Gi	Output Voltage - Vo(V)	Input R1(Ω)	Input R2(Ω)	Transition Frequency - Ft(MHZ)	Package	Polarity
DTC114TE	150	100	50	100	0.3	10K	0	250+	SOT-523	NPN
DTC114TUA	200	100	50	100	0.3	10K	0	250+	SOT-323	NPN
DTC114WCA	200	100	50	24	0.3	10K	4.7K	250+	SOT-23	NPN
DTC114WE	150	100	50	24	0.3	10K	4.7K	250+	SOT-523	NPN
DTC114WUA	200	100	50	24	0.3	10K	4.7K	250+	SOT-323	NPN
DTC114YCA	200	70	50	68	0.3	10K	47K	250+	SOT-23	NPN
DTC114YE	150	70	50	68	0.3	10K	47K	250+	SOT-523	NPN
DTC114YUA	200	70	50	68	0.3	10K	47K	250+	SOT-323	NPN
DTC123JCA	200	100	50	80	0.3	2.2K	47K	250+	SOT-23	NPN
DTC123JE	150	100	50	80	0.3	2.2K	47K	250+	SOT-523	NPN
DTC123JUA	200	100	50	80	0.3	2.2K	47K	250+	SOT-323	NPN
DTC123YCA	200	100	50	33	0.3	2.2K	10K	250+	SOT-23	NPN
DTC123YE	150	100	50	33	0.3	22K	10K	250+	SOT-523	NPN
DTC123YUA	200	100	50	33	0.3	2.2K	10K	250+	SOT-323	NPN
DTC124ECA	200	100	50	56	0.3	22K	22K	250+	SOT-23	NPN
DTC124EE	150	100	50	56	0.3	22K	22K	250+	SOT-523	NPN
DTC124EUA	200	100	50	56	0.3	22K	22K	250+	SOT-323	NPN
DTC143ECA	200	100	50	20	0.3	4.7K	4.7K	250+	SOT-23	NPN
DTC143EE	150	100	50	20	0.3	4.7K	47K	250+	SOT-523	NPN
DTC143EUA	200	100	50	20	0.3	4.7K	4.7K	250+	SOT-323	NPN
DTC143TCA	200	100	50	100	0.3	4.7K	0	250+	SOT-23	NPN
DTC143TE	150	100	50	100	0.3	47K	0	250+	SOT-523	NPN
DTC143TUA	200	100	50	100	0.3	4.7K	0	250+	SOT-323	NPN
DTC143XCA	200	100	50	30	0.3	4.7K	10K	250+	SOT-23	NPN
DTC143XE	150	100	50	30	0.3	4.7K	10K	250+	SOT-523	NPN
DTC143XUA	200	100	50	30	0.3	4.7K	10K	250+	SOT-323	NPN
DTC143ZCA	200	100	50	80	0.3	4.7K	47K	250+	SOT-23	NPN
DTC143ZE	150	100	50	80	0.3	4.7K	47K	250+	SOT-523	NPN
DTC143ZUA	200	100	50	80	0.3	4.7K	47K	250+	SOT-323	NPN
DTC144ECA	200	100	50	68	0.3	47K	47K	250+	SOT-23	NPN
DTC144EE	150	100	50	68	0.3	47K	47K	250+	SOT-523	NPN
DTC144EUA	200	100	50	68	0.3	47K	47K	250+	SOT-323	NPN
DTC144TCA	200	100	50	100	0.3	47K	0	250+	SOT-23	NPN
DTC144ITE	150	100	50	100	0.3	47K	0	250+	SOT-523	NPN
DTC144TUA	200	100	50	100	0.3	47K	0	250+	SOT-323	NPN



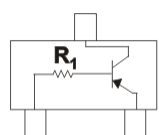
NPN R1 Only



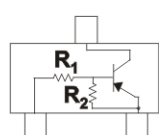
NPN R2 Only



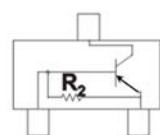
NPN R1&R2



PNP R1 Only



PNP R1&R2



PNP R2 Only